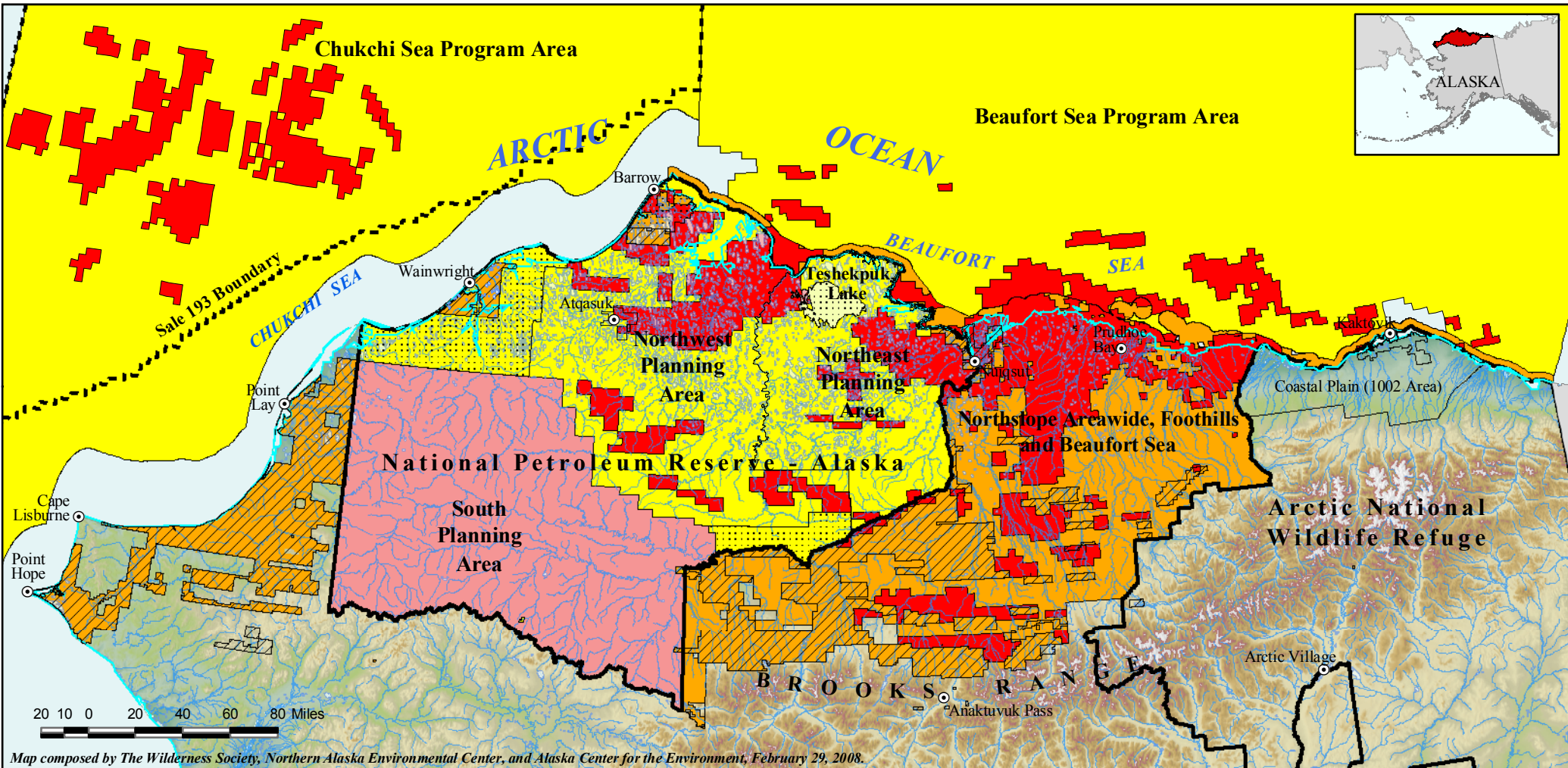


# Current and Proposed Oil & Gas Leases on Alaska's North Slope



Map composed by The Wilderness Society, Northern Alaska Environmental Center, and Alaska Center for the Environment, February 29, 2008.

- Sold Federal and State leases
- Active Federal Lease Area
- Proposed Federal Lease Plan Area
- Active State Lease Areas
- ASRC Surface and/or subsurface lands
- Barrow Native Lands

## National Petroleum Reserve - Alaska (Federal BLM)

- \* *Northwest Planning Area*  
4.6 million acres - 100% opened to lease in 2006  
  - Lake deferred for an unspecified amount of time
 Supplemental DEIS released August 2007  
 Next lease sale in October 2008
- \* *Northwest Planning Area*  
8.8 million acres - 100% opened to lease 2004  
  - Open to exploration but deferred from development until 2014
 Next lease sale in October 2008
- \* *South Planning Area*  
9.2 million acres  
 Scoping completed 2006

## Arctic Ocean (Federal MMS)

- \* *Beaufort Sea Program Area 2007-2012*  
33.2 million acres (an increase from 9.4 million acres)  
 Lease Sale 202 - 97% offered for lease in 2007  
 Next Lease Sale (209) in 2009
- \* *Chukchi Sea Program Area 2007-2012*  
39.3 million acres (an increase from 33.8 million acres)  
 Lease Sale 193 - 75% offered in 2008  
 Next Lease Sale (212) in 2010
- State**  
 \* *Northslope Areawide, Foothills and Beaufort Sea*  
 14.4 million acres in active lease plan areas  
 4.0 million acres in existing leases